



## European Dealers

### IP Products: Spray-on bed liners & truck bed liners

#### IP 1000®



IP 1000® was invented by Industrial Polymers in 1995 as a spray-on truck bed liner product for light duty pick-up trucks. It is a tough, thick, urethane polymer coating, which is flexible and protects surfaces from day to day wear and tear, weathering, corrosion and abrasion. Rigorous laboratory testing has independently proved its status as the best spray liner. In short, IP 1000®'s industrial polymer technology means can withstand much higher levels of extreme use without adverse effect.

The difference between IP 1000® and other brands is that the higher tensile and tear strength mean it offers much better protection. Furthermore, this strength can be further improved by mixing with sand and or aluminium oxide grit additives to provide an aggressive non-skid surface or a Kevlar® fibre additive, an exclusive option, to improve cut and tear resistance. This is recommended for heavy-duty/hard use trucks and high impact areas.

Based on the strength tests it provides a tough high build (4600 psi tensile strength) protective coating, applied to the recommended thickness of approximately 2.5-3mm. However, if required, it can be sprayed thicker for an additional cost. IP 1000® can also be sprayed over rails and topcaps giving added protection from side loading and chafing damage from hard tops and canopies. It is recommended for use on truck beds, heavy equipment, marine or industrial applications.

IP 1000® offers easy mixing and simple spray-on application through a low cost gravity feed hopper spray gun or may be applied by brush or paint roller.

IP 1000® is packaged in convenient one gallon containers complete with 1 quart activator and your choice of 18 colour options. It also is a low V.O.C. coating (contains less than 3 pounds per gallon VOC content) offering good UV and chemical resistance.



### **Advantages**

Fantastic physical properties – extremely tough against abuse  
Excellent UV protection – keeps its colour for a long time  
Inexpensive equipment – get started with very little money  
Simple to use – minimizes mistakes  
Competitive advantage – no competitor's product is stronger

### **Disadvantages**

Available only in 4 gallon cases – mixing and spraying may take too long for large volume users  
30% VOC – may require special permitting and/or tracking in some regions  
Slow dry time – must protect wet coating from cold and/or wet weather. May be problematic for high-volume users as well as other niche applications

### **Applications**

Truck bed liners, boat decks, rocker panels, livestock trailers, jeep floors, utility trucks, hunting vehicles, salt trucks, fire trucks, airport baggage tractors & trailers, custom audio speaker cabinets

### **Strength (tensile)**

4,800 psi (ASTM D 412 Die C)

### **Hardness**

90 Shore A scale

### **UV**

Excellent

### **Application method(s)**

Brushed, Roll on, Hopper Gun, Modified Pressure Pot

### **VOC**

30% by weight

### **Dry Time**

Dry to touch in 60 to 90 minutes at 70 degrees F

### **Packaging**

4 gallon cases (each two-part gallon kit is premeasured)

### **Standard Colours**

Black, red, garnet red, charcoal grey, medium gray, dove grey, indigo blue, medium blue, dark blue, emerald green, medium green, dark green, orange, safety yellow, petrol blue, camo green, camo brown, white (must use a top coat)

### **Other Colours Available**

Can be mixed with standard automotive colour tints

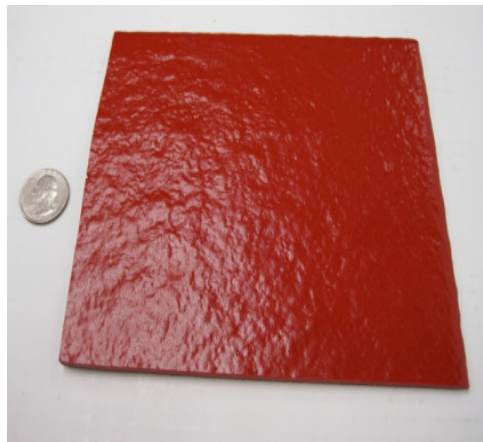


## IP CRX

IP CRX invented by Industrial Polymers in 2010 is the first of its kind chemical resistant spray-on rubber coating for applications where high concentrations of Acids and Alkali are present in the environment. It provides excellent resistance to Chlorinated Water, Nitric Acid, Hydrochloric Acid, Phosphoric Acid, Sodium Hydroxide, Sulphuric Acid, Clorox and Ammonia. (See technical data information for complete information).

IP CRX It is used in applications where a flexible rubber coated surface is needed to resist abrasion, impact and corrosion over metal, fiberglass or masonry surfaces. It offers easy mixing and simple spray-on application through a low cost gravity feed hopper spray gun or may be applied by brush or paint roller. It can be mixed with sand and or aluminium oxide grit additives to provide an aggressive non-skid surface. IP CRX is packaged in convenient one gallon containers complete with 1 quart activator and your choice of 17 colour options. White is unavailable due to the UV resistance.

Based on strength tests, IP CRX provides a tough high build (4600 psi tensile strength) protective coating applied to the recommended thickness of approximately 2.5-3mm without sagging. It is recommended for use on truck beds, heavy equipment, marine or industrial applications. It is also a low V.O.C. coating (contains less than 3 pounds per gallon VOC content) offering good UV and excellent chemical resistance.





### **Advantages**

Excellent protection against harsh cleaning solvents, acid and alkali  
Fantastic physical properties – extremely tough against abuse  
Excellent UV protection – keeps its colour for a long time  
Inexpensive equipment – get started under £3,000.00  
Simple to use – minimizes mistakes

### **Disadvantages**

Available only in 4 gallon cases – mixing and spraying may take too long for large volume users  
30% VOC – may require special permitting and/or tracking in some regions  
Poor resistance to gas, diesel and oil  
Cannot be applied in cold (below 60F) or wet environments

### **Applications**

Pools, spas, floors in food processing plants and kitchens, showers, secondary containment tanks, silos, chemical storage tanks, and any application requiring high chemical resistant coating

### **Strength (tensile)**

2,700 psi (ASTM D 412 Die C)

### **Hardness**

75 Shore A scale

### **UV**

Excellent

### **Application method(s)**

Brushed, Roll on, Hopper Gun, or Modified Pressure Pot

### **VOC**

30% by weight

### **Dry time**

Dry to touch in 60 to 90 minutes at 70 degrees F

### **Packaging**

4 gallon cases (each two-part gallon kit is premeasured)

### **Standard Colours**

Black, red, garnet red, charcoal grey, medium grey, dove grey, indigo blue, medium blue, dark blue, emerald green, medium green, dark green, orange, safety yellow, petrol blue, camo green, camo brown, white (must use a top coat)

### **Other Colours Available**

Can be mixed with standard automotive colour tints



## Epic

IP EPIC is a high performance urethane elastomeric texture coating, specifically designed for high build applications, and is proven to be over 500% stronger than the nearest competitor.

This product is especially formulated to have high tensile and tear resistance with outstanding abrasion resistance for extreme durability.

When fully cured, IP EPIC forms an extremely tough, abrasive resistant rubber coating, especially well-suited for applications requiring protection from impact, abrasion, or corrosion on metal, wood or concrete surfaces. It can also be mixed with a Kevlar fibre additive to provide an improved cut and tear resistance. IP EPIC textured surfaces provide excellent non-slip surfaces in both wet and dry environments.

Strength tests show IP EPIC provides a tough high build (7360psi tensile strength) and a hardness of 92 Shore A. is packaged in convenient one gallon containers complete with 1 quart activator and your choice of 18 colour options. It also is a low V.O.C. coating (contains less than 3 pounds per gallon VOC content) offering good UV and chemical resistance.

For additional information and photos and video demonstrations of how the Epic works please visit the website at [www.poly4u.nl](http://www.poly4u.nl)



It is now the world's toughest spray-on liner and will not split, crack, peel, break, fade or cause corrosion.

IP EPIC is 100% UV stabilised with a tough 7500 PSI tensile rating and 1450 PSI tear strength.

It is a thick textured polymer surface that is simply rolled, brushed or sprayed on wood, concrete, fibreglass and metal surfaces and has a range of 18 stock colours (some metallic) and can use standard PPG auto pigments.

Mixed sand or grit additives with EPIC to provide a non-skid surface.

It comes with all the attributes of the 1000 & CRX products but it is nearly twice as strong. It is colour fast, has maximum UV stability, incredible flexibility, and incredibly high abrasive wear factor and tear strength.

It can be applied in same huge range of industries ranging from marine and auto to industrial, mining and military.

<u>Test</u>	<u>Competitor</u>	<u>1000</u>	<u>Epic</u>	
Tensile Strength	1800 psi	4900 psi	7500 psi	> 400%
Tear Strength	250 lbs-f/in	865 lbs-f/in	1450 lbs-f/in	> 580%
Abrasive Wear Factor	not available	4.4 mg loss per 1000 rev	0.0044 mg loss per 1000 rev	>1000%



## **Primers 450 & 460**

Primer 450 is a two component urethane primer used to increase adhesion of urethanes to painted metal surfaces, wood, (some plastic surfaces) or concrete. Primer 450 is required when installing our IP 1000® spray on truck bed liner product into cargo bed area of light duty trucks or other painted metal surfaces.

Primer 450 is also used as a bonding agent between new and old urethane coatings. It is applied by spraying, brushing or roller application. For best results, surface should be cleaned, abraded and wiped with solvent prior to application. When recoating spray-on truck bed liners, Primer 450 must be used to bond new truck bed liner coating over existing spray-on truck bed liners. Cure time depends on temperature and relative humidity, Mix ratio 1:1 by volume, brush, roller or spray-on application.

See the IP product page for complete information on our spray-on truck bed liner products. Primer 450 contains VOC solvents and is classified as flammable material, see material safety information.

Primer 460 is a two-component primer used to increase the adhesion of urethane coatings to fiberglass or aluminium surfaces. Cure time depends on temperature and relative humidity, Mix ratio 1:1 by volume, brush, roller or spray-on application. The application procedure for fiberglass surfaces: clean and abrade fiberglass surface, solvent wipe, apply Primer 460. Primer 460 contains VOC solvents and is classified as flammable material, see material safety information.



## **Kevlar KE-2000**

IP Products are the only protective liners to use DuPont's KEVLAR KE 2000™ fibre additive for superior strength. This KEVLAR™ KE 2000™ fibre will further increase cut and tear resistance for extreme performance applications. It is the same fibre the military uses to manufacture bullet resistant vests and armoured vehicles we use to provide extraordinary tensile strength (4,200 psi) and tear strength (610 lbs./in.)

*KE-2000*



## Top Coats 6 & 9

TOPCOAT 6™ and TOPCOAT 9™ are ideal for when a super strong water proof protection is needed. It is the only product of its type that can be sprayed, rolled and brushed, allowing non slip additives to be easily added. **The** thickness can be applied from 1mm to 150 mm whatever the application.

**TOPCOAT 6™** provides a super tough waterproof coating and has maximum UV protection.

**TOPCOAT 6™** can be rolled, brushed or sprayed on wood, concrete, fibreglass and metal surfaces.

**TOPCOAT 6™** also comes in 18 stock colour range, or use standard automotive PPG pigments.

**TOPCOAT 6™** is a scratch resistant and damage resistant surface with the ability of shape memory.

**TOPCOAT 6™** can be used on industrial equipment, cars and boats.

**TOPCOAT 6™** provide you with a waterproof surface protection never before seen.

TOPCOAT 9™ offers all the properties of TOPCOAT 6™ but with added flexibility needed for difficult applications.

Excellent low-VOC paint-like coating yet very strong at thin mils. Similar to Top Coat 6 but much more flexible. Perfect as a final finish over a coated flexible foam surface. Perfect for enhancing all IP products with increased UV protection, enhanced chemical resistance or custom cosmetic work (i.e. custom logos and graphics).



Black

Charcoal  
Grey

Medium  
Grey

Dove  
Grey

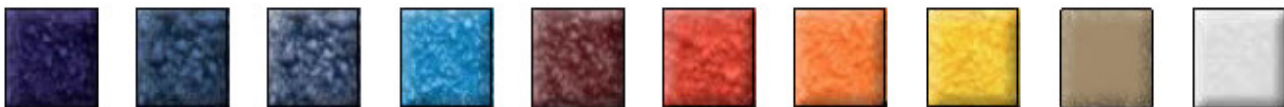
Dark  
Green

Emerald

Medium  
Green

Cami  
Green

Cami  
Brown



Dark  
Blue

Petrol  
Blue

Indigo  
Blue

Medium  
Blue

Garnet  
Red

Red

Orange

Yellow

Desert  
Tan

White

IP 1000®, IP CRX & IP EPIC are all available in the above 18 colours, with the exception of IP CRX which is not available in white, due to its UV properties.



# POLY4U

## **Advantages**

Very UV stable – 100% aliphatic  
Chemical resistance to hydrocarbons  
Low VOC  
High solids – good coverage  
Variety of colours available

## **Top Coat 6 Properties**

## **Disadvantages**

30% VOC – may require special permitting and/or tracking in some regions  
Slow dry time – must protect wet coating from cold and/or wet weather.

## **Applications**

Colour enhancement and chemical protection for all Speedliner® products.  
Utilized when spraying IP-1000® in white or other lighter colours  
Custom graphics and decals over IP-1000®

## **Strength (tensile)**

N/A

## **Hardness**

95 - 100 Shore A scale

## **UV**

Excellent

## **Application method(s)**

Sprayed (conventional paint equipment), brushed, or rolled on



## **VOC**

30% by weight

## **Dry time**

Dry to touch in 60 to 90 minutes at 70 degrees F, 70% cure in 24 hours (at 70 degrees), 100% in 72 hours (at 70 degrees)

## **Packaging**

quart kits, gallon kits, 5-gallon pails

## **Standard Colours**

Black, red, garnet red, charcoal grey, medium grey, dove grey, indigo blue, medium blue, dark blue, emerald green, medium green, dark green, orange, safety yellow, petrol blue, camo green, camo brown, white

## **Other Colours Available**

Can be mixed with standard automotive colour tints, ask your customer service agent for details. Most commonly used when spraying IP-1000® in white.

# POLY4U

## **Advantages**

Very UV stable – 100% aliphatic  
Chemical resistance to hydrocarbons  
Low VOC  
High solids – good coverage  
Flexible - for flexible substrates  
Variety of colours available

## **Top Coat 9 Properties**

## **Disadvantages**

30% VOC – may require special permitting and/or tracking in some regions  
Slow dry time – must protect wet coating from cold and/or wet weather.

## **Applications**

Colour enhancement and chemical protection for all IP products, coated flexible foam

## **Strength (tensile)**

N/A

## **Hardness**

75 - 85 Shore A scale

## **UV**

Excellent

## **Application method(s)**

Sprayed (conventional paint equipment), brushed, or rolled on

## **VOC**

30% by weight

## **Dry time**

Dry to touch in 60 to 90 minutes at 70 degrees F, 70% cure in 24 hours (at 70 degrees), 100% in 72 hours (at 70 degrees)

## **Standard colours**

Black, red, garnet red, charcoal grey, medium grey, dove grey, indigo blue, medium blue, dark blue, emerald green, medium green, dark green, orange, safety yellow, petrol blue, camo green, camo brown, white

## **Other colours available**

Can be mixed with standard automotive colour tints, ask your customer service agent for details





## Hopper Gun Spray System

### MATERIAL

- IP 1000®
- Truekote CS-200

### APPLICATIONS

Truck Bedliners, Trailers, Boat Decks, Rocker Panels, Stairs, Walkways, Floors, Farm Equipment, Tool Boxes, Truck Accessories, Jeep (Interior and Exterior), Speaker boxes, and more.

### COMPRESSOR

- Minimum 3 HP (230 V, 1 phase) 2 cylinder with 60-gallon tank capable of 11.3 CFM @ 90 psi to be used exclusively for equipment only. Automatic drain is highly recommended.
- Minimum 5 HP with 80-gallon tank may be necessary if others in the shop will be using air tools simultaneously.

### REFRIGERANT DRYER

- The spray air needs to be less than 5% relative humidity as it leaves the gun.
- A 3-in-1 refrigerant dryer for you compressor is mandatory.
- Air membrane dryer is mandatory.

### APPLICATION AREA - for truck bedliners only

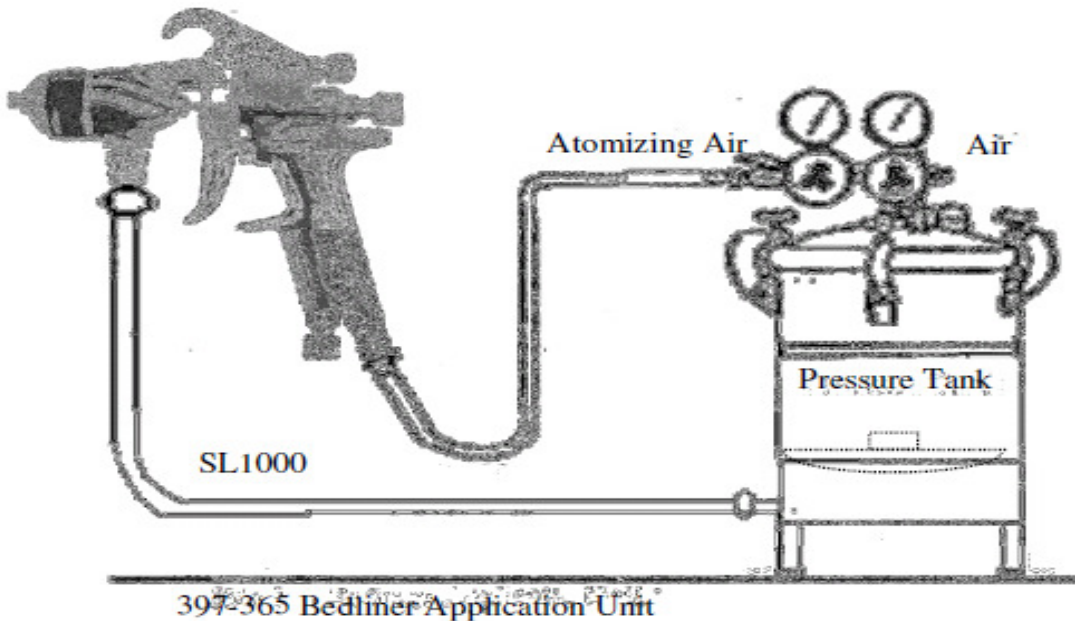
- One truck: 16ft wide x 16ft deep x 11ft high (minimum)
- Two trucks: 24ft wide x 18ft deep x 11ft high (minimum)
- Fluorescent lighting
- Tar paper on floor with duct tape
- Polyethylene curtains capable of completely enclosing spray area (NFPA 701 compliant)
- Ventilation fans must exhaust air 2-3 times per minute. Forced makeup air will be required. Heated air will be needed in colder climates. Note: To determine the CFM of exhaust fan, take total volume of the room and double that number. 3,000 cu ft. room will require 6,000 cu ft. fan.





**IP-1000® BEDLINER APPLICATOR UNIT AND PRIMER APPLICATORS**

Applicator unit consist of a high volume industrial air spray gun with air meter valve, 13' atomizing air and fluid all hose set, and double regulated 2½ gallon bottom outlet pressure tank with pot liner and follow plate. Unit assembled and pressure checked before shipment.  
HVLP primer spray gun, industrial quality, gravity feed cup.  
Compressed air requirement: 10 CFM of clean dry air @ 100 psi.

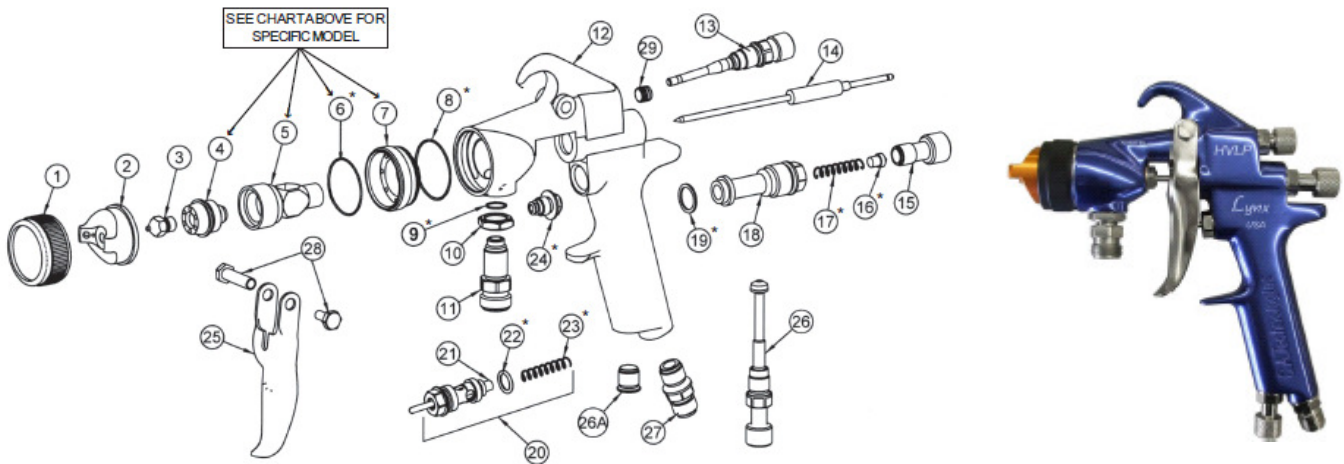




## L100 Series Pressure/Siphon Feed Spray Gun

### L100C CONVENTIONAL SPRAY GUN

MATERIAL TYPE	FLUID ORIFICE x AIR CAP	MAXIMUM PATTERN WIDTH	PRESS. / SIPHON
Heavy	1.5, 1.8mm x 2466	13	S
over 30 sec. Zahn #2	2.2 mm x 2167	12	P
heavy body primers	2.2 mm x 2267	15	P
high solid enamels	2.8 mm x 2168	12	P
high solid automotive coatings			
adhesives			



### CONVENTIONAL AIR CAP AND FLUID NOZZLE CHART

MODEL NO.	AIR CAPS	Press / Siphon	*SUGGESTED GUN INLET PRESS.	FAN CONTROL	SCFM	AIR CAP RING	AVAILABLE FLUID NOZZLES	NEEDLES / marking on needle		
L100C	21-2163	pressure	50	60-1500	8	included	31-0606 0.6mm (.022")	40-1107 (107)		
	21-2263	pressure	50		14				31-0607 0.7mm (.028")	
	21-2263-E	pressure	50		15					31-0610 1.0mm (.040")
	21-2363	pressure	50		13.6		31-0612 1.2mm (.046")			
	21-2166	siphon	50		5			31-0613 1.3mm (.052")		
	21-2266	siphon	50		12				31-0615 1.5mm (.059")	
	21-2266-3	pressure	50		16.2		31-0618 1.8mm (.070")			
	21-2366	siphon	50		12			31-0622 2.2mm (.086")		
	21-2466	siphon	50		15				31-0628 2.8mm (.110")	
	21-2167	pressure	50		14.5					
	21-2267	pressure	50		15					
	21-2168	pressure	50		14					
	21-200**	pressure	50		5.2					
	21-201**	pressure	50		5.2					

Actual fluid nozzle and air cap combinations are determined by application (see application chart page 4)

\*Gun inlet pressures may vary as required by application

\*\*200 Air cap requires P/N 21-1583 base & 21-1584 ring



### European Dealers IP Product Prices

Product	Size	Weight	Packaging	European Dealer Price Exc. VAT
IP 1000 <sup>®</sup>	4 gallon kit	14.66kg	(4) 1 gallon cans & (4) 1 quart cans	€340.00
IP CRX	4 gallon kit	13.84kg	(4) 1 gallon metal round & (4) 1 quart metal square	€480.00
IP EPIC	4gallon kit		(4) 1 gallon cans & (4) 1 quart cans	€468.00

Prices correct as of Oktober 2015. All prices subject to change without notice.

Please note: All prices quoted exclude VAT, Local Area Tax & Carriage. Carriage quote(s) dependant on the weight of orders.

Please see the website for a complete list of freight costs.

[www.poly4u.nl](http://www.poly4u.nl)



**Consumables and Related Product Prices**

Product	Size	Weight	Packaging	European Dealer Price Exc. VAT
Primer 450	2 quart kit	1.75kg	(2) 1 quart cans	€49.00
Primer 450	2 gallon kit	7.00kg	(2) 1 gallon cans	€179.00
Primer 450	10 litre kit	34.99kg	(2) 1 quart cans & (2) 1 gallon cans	€214.00
Primer 460	1 pint kit	0.44kg	(2) 1/2 pint containers	€39.00
Primer 460	2 quart kit	1.75kg	(2) 1 quart cans	€84.00
Primer 460	2 gallon kit	7.00kg	(2) 1 gallon cans	€239.00
Top Coat 6	2 quart kit	1.81kg	(2) 1 quart cans	€72.00
Top Coat 6	2 gallon kit	7.22kg	(2) 1 gallon cans	€239.00
Top Coat 9	2 quart kit	1.88kg	(2) 1 quart cans	€72.00
Top Coat 9	2 gallon kit	7.51kg	(2) 1 gallon cans	€252.00
Kevlar	1 bag		Plastic Bag	€12,50
Cherry Scent	1/2 pint kit	0.24kg	(1) 1/2 pint can & (5) 5-cc syringes	€22,50
Cherry Scent	1 pint kit	0.49kg	(1) 1 pint can & (10) 5-cc syringes	€50.00
Cherry Scent	1 quart kit	0.98kg	(1) 1 quart can & (20) 5-cc syringes	€98.00

Prices correct as of Oktober 2015. All prices subject to change without notice.

Please note: All prices quoted exclude VAT, Local Area Tax & Carriage. Carriage quote(s) dependant on the weight of orders. Please see the website for a complete list of freight costs.

[www.poly4u.nl](http://www.poly4u.nl)



**IP Products – Available Colours.**

Colour	Weight	Packaging	European Dealer Price Exc. VAT
Black	0.14kg	1 tube	€9.50
Camouflage Green	0.14kg	1 tube	€12.50
Camouflage Brown	0.14kg	1 tube	€12.50
Dark Blue	0.14kg	1 tube	€14.50
Dark Green	0.14kg	1 tube	€12.50
Desert Tan	0.14kg	1 tube	€12.50
Emerald Green	0.14kg	1 tube	€12.50
Garnet Red	0.14kg	1 tube	€14.50
Indigo Blue	0.14kg	1 tube	€14.50
Medium Blue	0.14kg	1 tube	€14.50
Charcoal Gray	0.14kg	1 tube	€14.50
Dove Gray	0.14kg	1 tube	€9.50
Medium Gray	0.14kg	1 tube	€9.50
Medium Green	0.14kg	1 tube	€14.50
Orange	0.14kg	1 tube	€14.50
Red	0.14kg	1 tube	€14.50
White	0.14kg	1 tube	€9.50
Yellow	0.14kg	1 tube	€9.50





Product	Size	Weight	Packaging	European Dealerr Price Exc. VAT
Jiffy Mixer	small (12")	-	-	€40.00
Jiffy Mixer	large (40")	-	-	€109.00
MEK* (Methyl Ethyl Keytone )	1 gallon		(1) 1 gallon metal can	€32,50
Spatula	6"			€32,50
Spatula	10"			€40.00
Spatula	14"			€52.50
Hopper Spray Gun			Complete kit	€145.00
Hopper Container				€52.50
Pressure Pot			Complete kit	From €825.00
Primer/Top Coat Spray Kit			Complete kit	Call for Details
O Ring Replacement	4 Small			€5.25
O Ring Replacement	2 Large			€5.25
Sand	1 bag for 2 SL gallons	3.37kg	plastic bag	€15.00
Sand/Aluminium Oxide Mixture 50/50	1 bag for 2 SL gallons	3.83kg	Plastic Bag	€35.00
Aluminium Oxide	1 bag for 2 SL gallons	4.08kg	plastic bag	€39.00
Crumb Rubber	1 bag for 2 SL gallons	1.27kg	plastic bag	€12.50
Toulene	1 gallon			€32.50
Nylon Cord Edge Cuing Tape			wire trim	